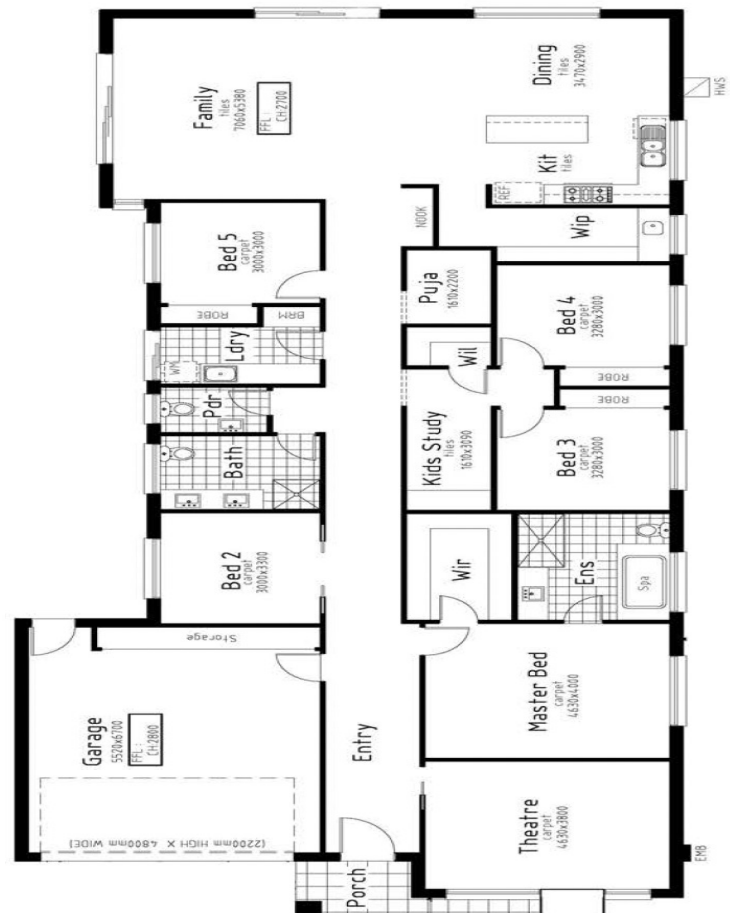


*LOT 316 The Enclave Estate, Wyndham vale  
House Size 31sq  
Land Size 768 m<sup>2</sup> irr*

*Turnkey Inclusions*

- Customised Floorplans
- 7 Star energy ratings to the house
- Fixed site costs
- Coloured Concrete Driveway
- Flooring throughout - Carpet and tiles
- LED lighting to Porch, entry, Kitchen, meals ,Living & Bedrooms
- Brick infills above all windows & doors
- 2700mm ceiling heights
- Stone Benchtops to Kitchen & Bathrooms
- Refrigerated heating & cooling
- Holland blinds
- 900mm Appliances
- All Design guidelines covered
- Letterbox, clothesline, Half share fencing
- **And so much more....**



\*Images displayed in this document are for illustration purposes only and may depicts upgraded items which are not included in the price. The price is based on land availability, inspection of the developer supplied engineering drawings, plans of subdivision and ASAC PROPERTY GROUP house floor plans. This package is subject to developer and council approval.

Call .... Sri Ph: 0404 164 211 Email: [satyasri@asacpropertygroup.com.au](mailto:satyasri@asacpropertygroup.com.au) [www.asacpropertygroup.com.au](http://www.asacpropertygroup.com.au)